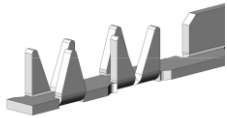


# CRIMPFLEX® 1,27mm pitch

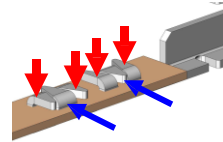
**NEW 2009**

certified ISO 9001 :2000

*NICOMATIC is now enriching the CRIMPFLEX® connector range to provide even more space and cost-savings solutions thanks to the 1,27 mm pitch. Our specifically designed Crimping Press allows you to crimp up to 25 contacts in a single operation in order to increase your productivity and eliminate any risk of pitch drift during the crimping process.*

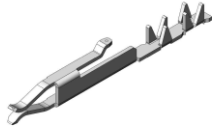


The contact crimping is achieved by piercing the conductor in 6 points, in order to ensure both outstanding **mechanical retention** by 2 points and **electrical continuity** by 4 points.  
 CRIMPFLEX® system patented by NICOMATIC



**Crimp Pad Design :**  
 please turn the page

## FEMALE CONTACT P/N 16068



16068-12 tin plated  
 16068-32 selective gold

for 0,38mm (.0015") to 0,45mm (.0018") pin header  
 Ni 2µ + Sn 5µ and optional selective Au plating 0,15µ on mating area



PACKAGED IN REEL

## MALE SOLDER TAB P/N 16069



16069-12 tin plated

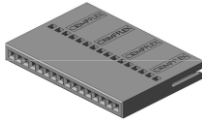
recommended for flexible supports requiring male solder tabs  
 Ni 2µ + Sn 5µ

### 1 ROW

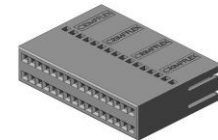
### HOUSING SERIES xx = number of ways

### 2 ROWS

M0F xx

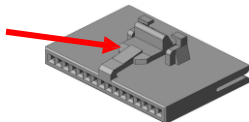


Side to side & end to end stackable  
 No Polarization nor locking

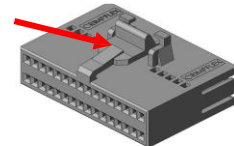


M4F xx

M0J xx

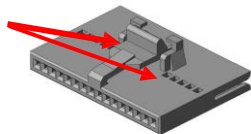


Easy mating/unmating to walled pinheaders  
 Locking by **latch**

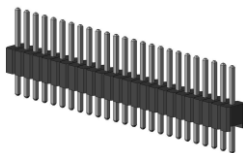


M4J xx

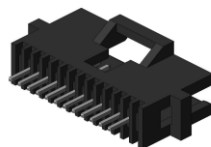
M0JR xx



Idem M0J type  
 Reverse **latch position**



straight male header  
 12-17-11M-xx-1



straight male socket  
 1L-10-11M-xx-1

available in single & double row, straight & 90°PCB  
 tin & gold plated contacts



### SPECIFICATIONS

#### MATERIAL

Contacts : phosphor bronze  
 Housings : glass fiber filled thermoplastic



#### MECHANICAL

Max. insertion force per contact : 1 N  
 Min. withdrawal force per contact : 0,15 N  
 Crimp strength to flexcable per contact: 50N min.

#### ELECTRICAL

Dielectric withstanding voltage : 900V RMS  
 Rated voltage : 300V RMS  
 Rated / peak current per contact : 3A / 4A RMS  
 Initial contact resistance: 10m Ω

#### THERMAL

UL 94-V0 classified  
 -55°C to +150°C operating temperature range

Vertrieb durch:



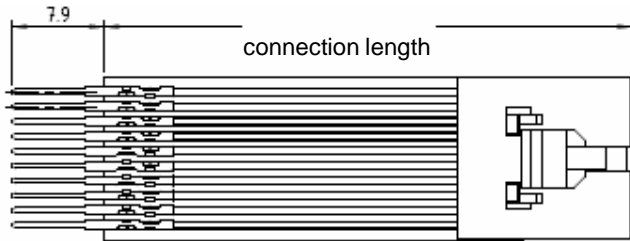
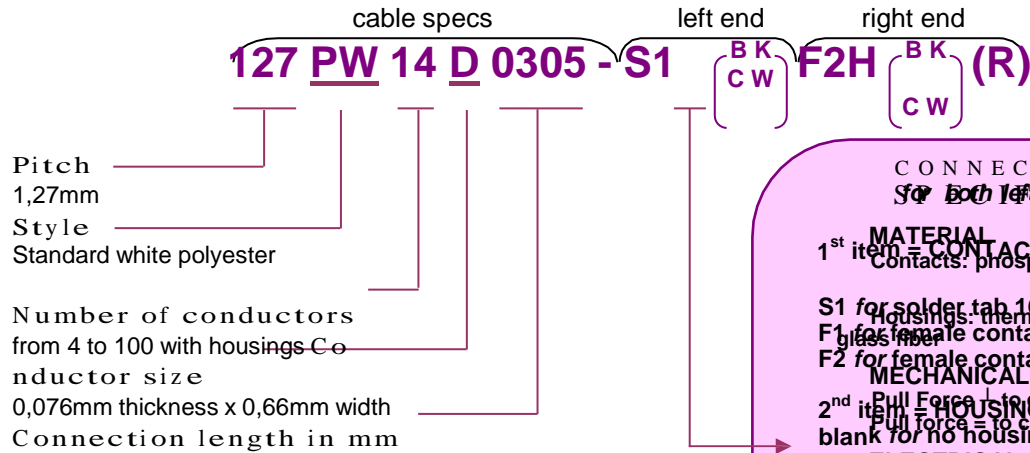
DICO Electronic GmbH  
 Rothenbergstraße 1a • 91126 Schwabach  
 Telefon +49 9128 9250-690 • Telefax +49 9128 9250-686  
 info@dico-electronic.de • www.dico-electronic.de



# CRIMPFLEX® 1,27mm Flexcable Jumpers

**NEW 2009**

## Part-Numbering system



connection length

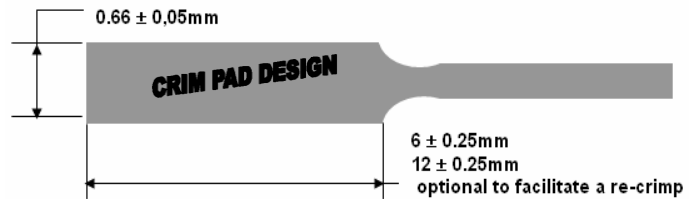
**CONNECTOR STYLE**  
 For both left & right ends

**MATERIAL**  
 1<sup>st</sup> item = CONTACT TYP. Contacts: phosphor bronze

**MECHANICAL**  
 2<sup>nd</sup> item = HOUSING blank for no housing  
 Pull Force to conductor: 15N mini. ?  
 Pull Force to housing: 50N mini. ?

**ELECTRICAL**  
 J for 110V max voltage : 1100V  
 T for 3A max current per cont  
 4 for M4Fxx  
 M for M4Jxx  
 Contact resistance: 5 mΩ

**THERMAL**  
 OPTIONS  
 B = bending to the crimping side  
 C = bending to the crimping opposite side  
 K = polyimide insulator (solder tab only)  
 W = polyester insulator (solder tab only)  
 R = left/right crimping at opposite sides



1.27mm FLEXCABLE SPECS

**MATERIAL & SIZE** Tinned copper conductors Insulator thickness: 0,05 mm x 2

**ELECTRICAL**  
 Operating voltage: 300 V RMS  
 Dielectric withstanding voltage: 1100V AC  
 AC current rating per conductor: 3A  
 Resistance: 105 Ω / km

**MECHANICAL**  
 Flex life: > 10 M.cycles at 25mm bend radius

**THERMAL**  
 UL flame rating VW-1  
 -55°C to + 105°C operating temperature range

March 2009 - non contractual document – NICOMATIC reserves the right to discontinue the production or to change the specifications of any part of this data sheet without prior notice - ©

Vertrieb durch:



DICO Electronic GmbH  
 Rothenbergstraße 1a • 91126 Schwabach  
 Telefon +49 9128 9250-690 • Telefax +49 9128 9250-686  
 info@dico-electronic.de • www.dico-electronic.de